

3.1.3. Construction

02HRJ10AF002

3.1.3.1 General assembly and parts list type AL-BL series

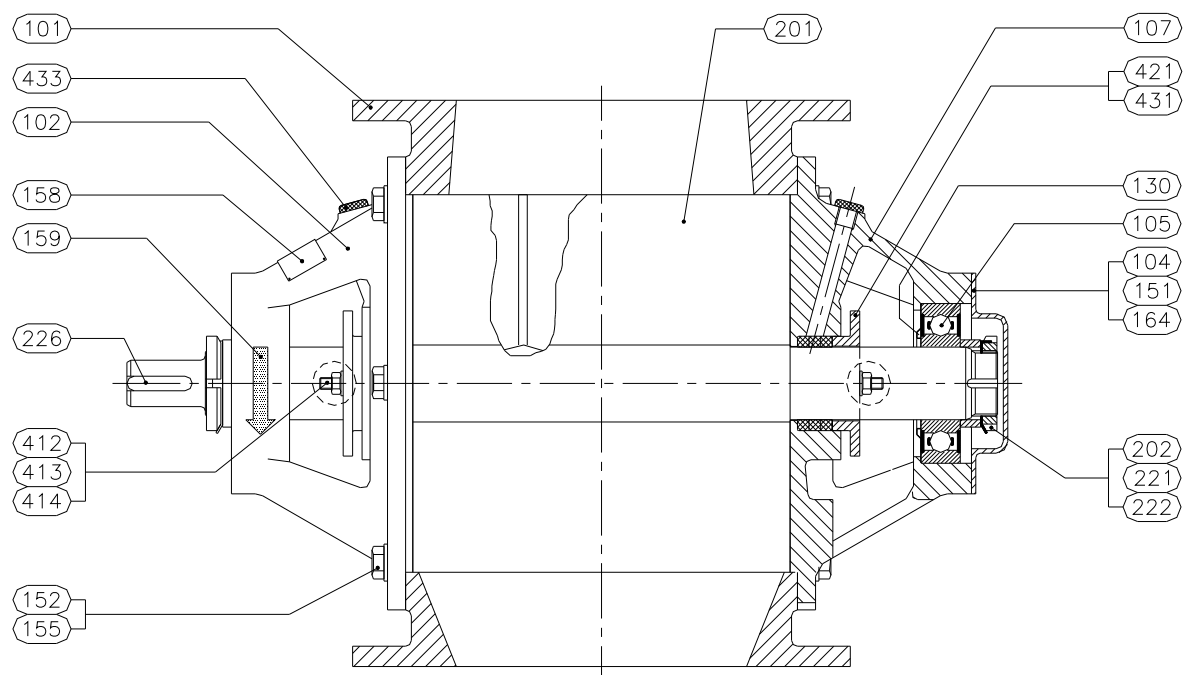


Fig. 3.1.3.1 Execution AL-AXL-AML.

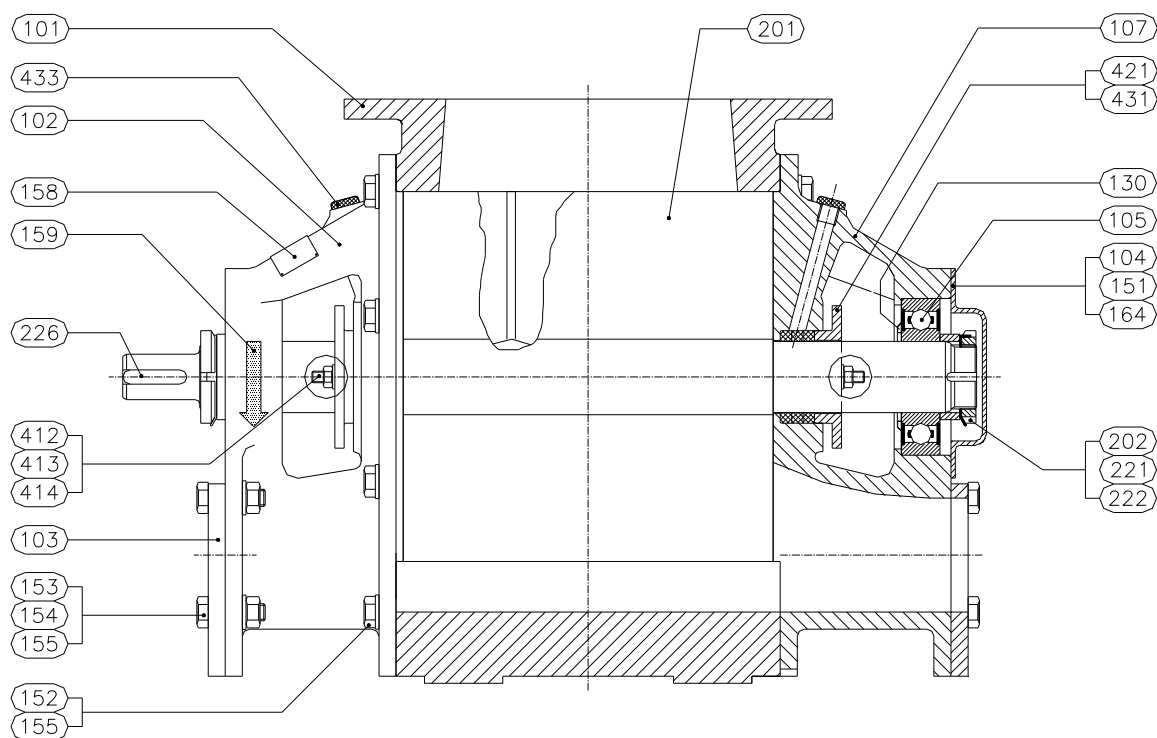
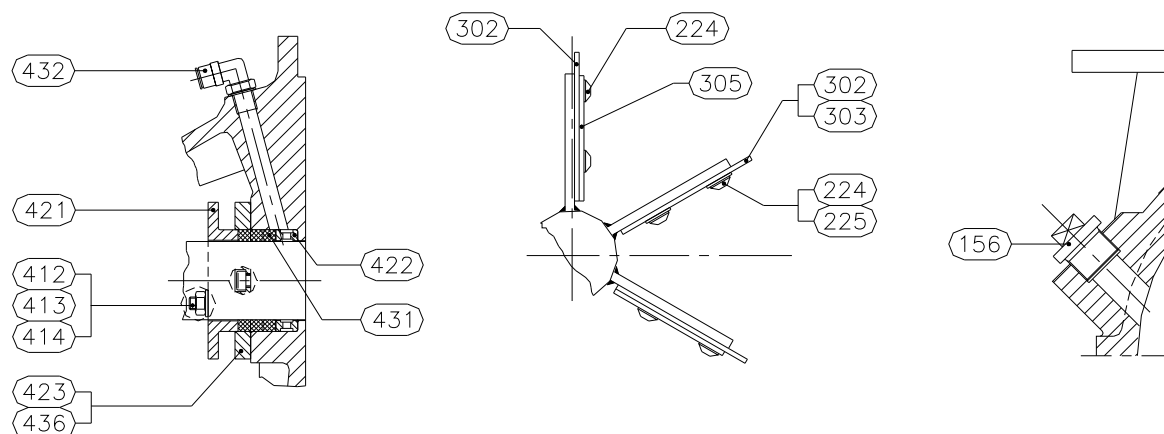


Fig. 3.1.3.2 Execution BL-BXL-BXXL.



101	Body	201	Rotor	412	Stud
102	End cover	202	Spacer ring	413	Nut
103	Flange	221	Safety ring	414	Washer
104	Cover	222	Locknut	421	Gland follower
105	Ball-bearing	224	Head screw	422	Lantern ring
107	End cover	225	Washer	423	Extension piece
130	Nilos ring	226	Key	431	Gland packing
151	Bolt	302	Rotor blade	432	Coupling
152	Bolt	303	Scraper blade	433	Plug
153	Nut	305	Clamp plate	436	Cylinder bolt
154	Bolt				
155	Washer				
156	Plug				
158	Name plate				
159	Arrow				
164	Washer				

3.6 Dismantling and assembly standard drive



Please follow safety instructions of chapter 1.
Access rotating part, mind your fingers.

3.6.1 Chain drive

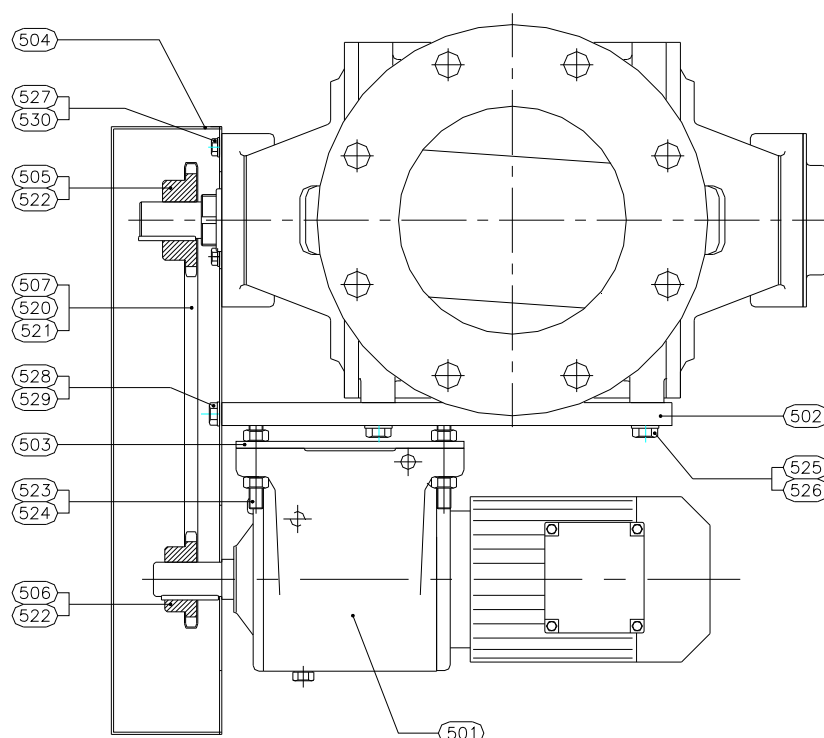


Fig. 3.6.1 Chain drive.

501 Drive	506 Chain wheel	522 Adjusting screw	527 Bolt
502 Support plate	507 Chain	523 Stud	528 Washer
503 Plate		524 Nut	529 Bolt
504 Chain guard	520 Chain joint	525 Bolt	530 Washer
505 Chain wheel	521 Half a link	526 Washer	

Dismantling

- Remove chain guard
- Dismantle chain
- Remove chain of chain wheel
- Loosen adjusting screw of chain wheel
- Remove chain wheels

Assembly

- Fit chain wheels on shaft
- Align chain wheels and secure
- Mount chain
- Tighten chain (see fig. 2.2)
- Refit chain guard